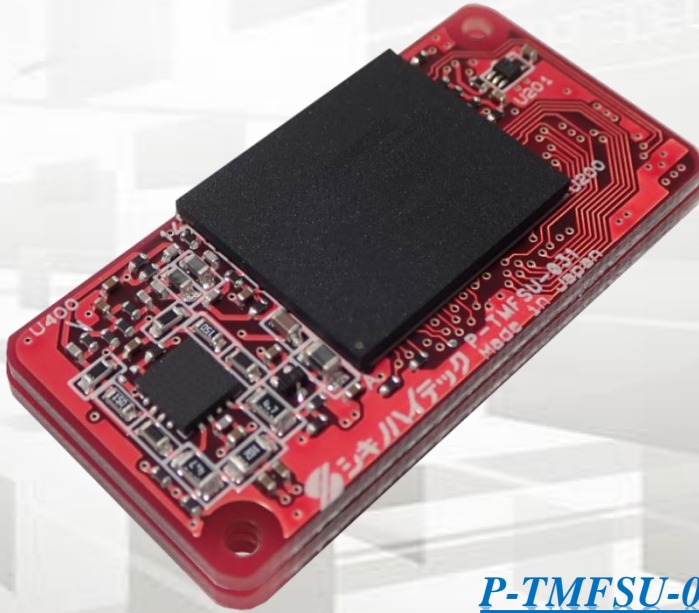


**NEW  
PRODUCT**

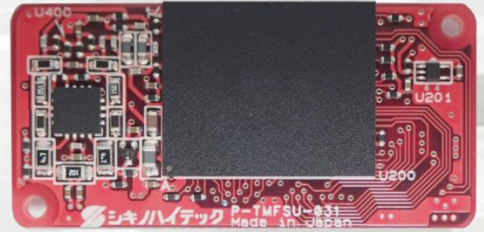
# IoT PLC Communication Module

# P-TMFSU-031

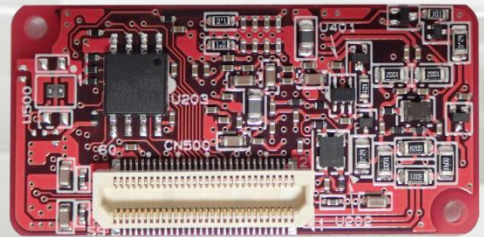
## <IoT PLC Communication Module> ~ IEEE1901-2010 Compliance "HD-PLC™" ~



Top side



Back side



P-TMFSU-031

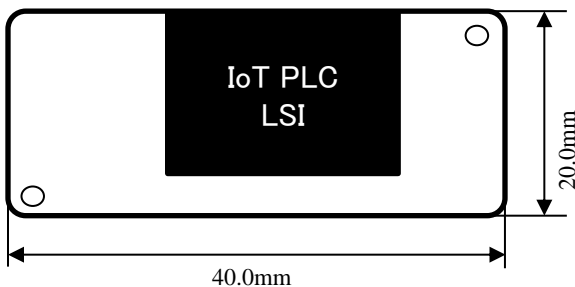
We support customer's network system building.

### [Features]

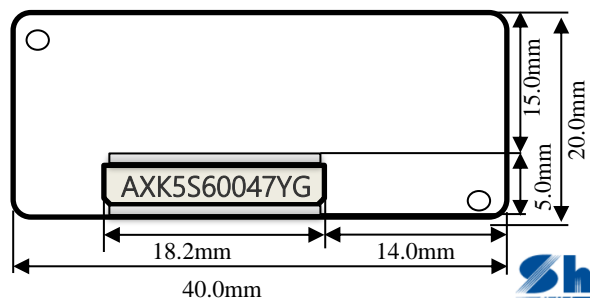
Item	Detail	
Module size	40.0mm * 20.0mm Height 5.9mm	
Leased line Coaxial line Power line	Frequency range	2MHz~28MHz
	Transmission method	WaveletOFDM
	PHY speed	Maximum 250Mbps
	Access method	CSMA/CA
Ethernet MII interface	Communication speed	Complete (UDP) Maximum 95Mbps (TCP) Maximum 70Mbps Multi-hop (UDP) Maximum 35Mbps (TCP) Maximum 25Mbps
	Communication speed	Maximum 192Kbps, Maximum 32 units connection
Power supply voltage	12V, 3.3V, 1.2V	
Power consumption	When transmitting / receiving, Maximum 1.3W	

### [External Dimensions]

Top side



Back side



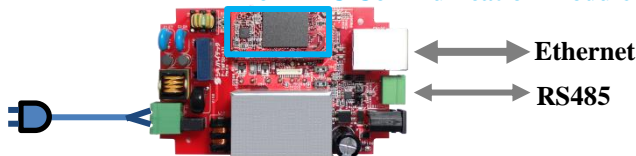


- ◆ We support “Dedicated adapters” design and manufacture based on the customer’s system environment. If there are any requests such as a custom design, please feel free to contact us.

## [Overview of Evaluation Adapter]

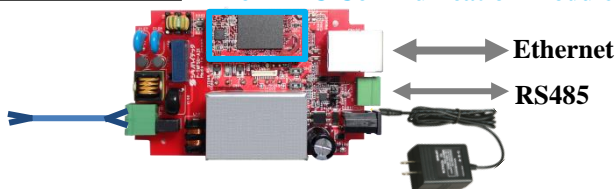
### Using on power lines

#### IoT PLC Communication Module

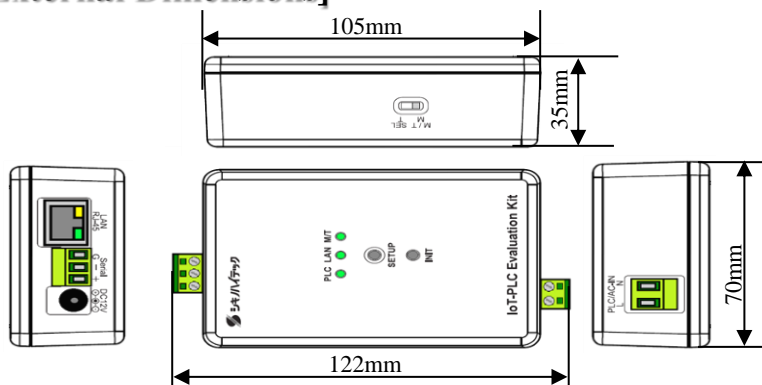


### Using on leased lines

#### IoT PLC Communication Module



## [External Dimensions]



## <Peripheral Equipment / Contracted Development>

- \* Support Specification matching, Circuit design, PCB design, Software, Manufacture of motherboards, I/F boards, etc. for "IoT PLC Communication Module" that customers require.
- \* Maintenance is available after delivery.
- \* Support the installation of "IoT PLC Communication Module" with advanced technology.

For any inquiries, please feel free to contact below.

Electronic Systems in HQ TEL +81-765-23-6176

Person in charge :

Sudo E-mail : sudo.kohei@shikino.co.jp

Michiba E-mail : michiba.kazuhiro@shikino.co.jp